

AIP DUTCH CARIBBEAN

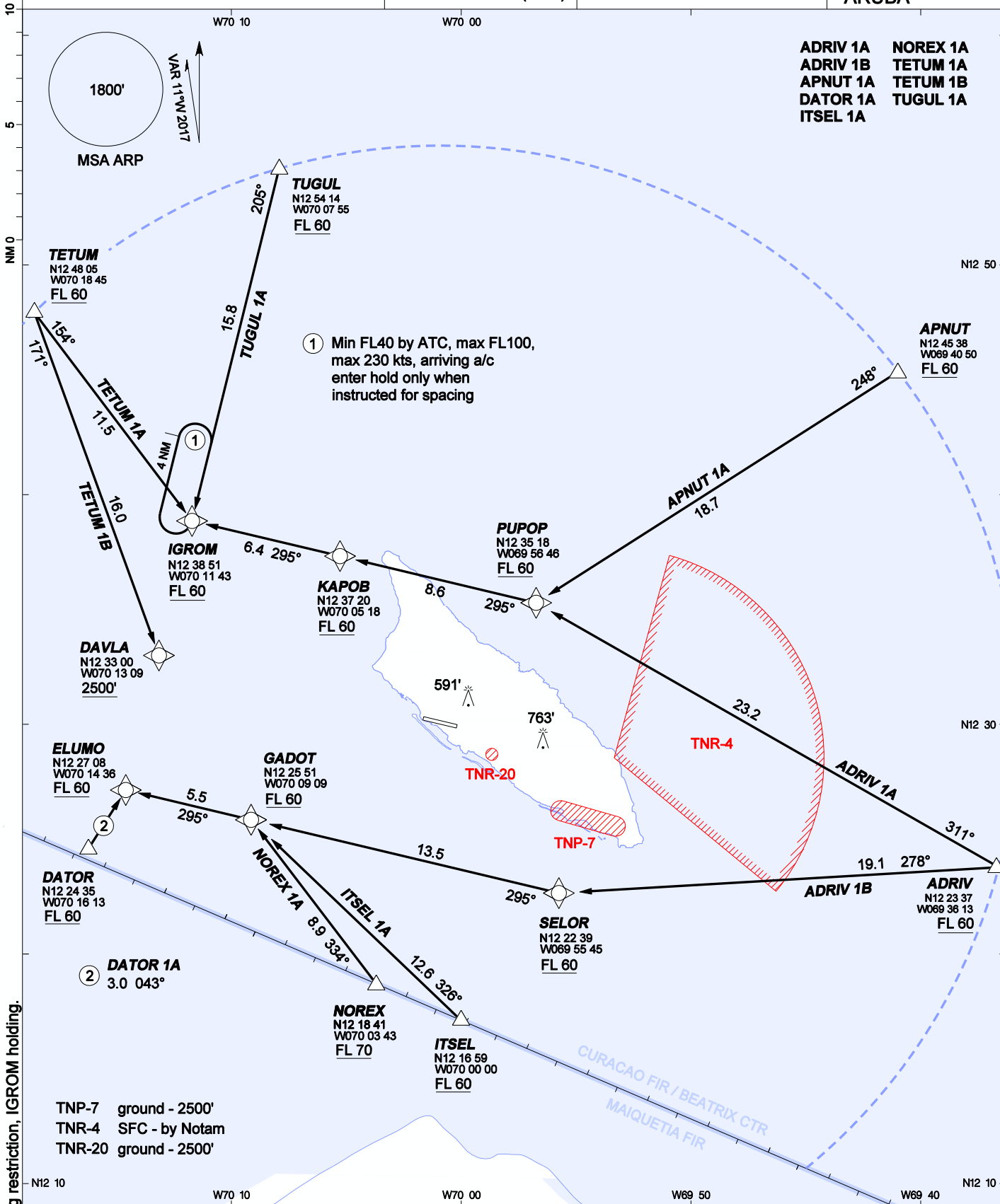
RNAV (GNSS) ARRIVALS RWY 11  
INSTRUMENT - ICAO

AD ELEVATION: 62'  
TRANS LEVEL: FL 40  
TRANS ALT: 2500' (2438')

BEATRIX:  
APP/TWR 120.9 GND 118.0  
APRON 121.6 ATIS 132.1

REINA BEATRIX  
INT'L (TNCA)  
ARUBA

ADRV 1A NOREX 1A  
ADRV 1B TETUM 1A  
APNUT 1A TETUM 1B  
DATOR 1A TUGUL 1A  
ITSEL 1A



① Min FL40 by ATC, max FL100, max 230 kts, arriving a/c enter hold only when instructed for spacing

② DATOR 1A 3.0 043°

TNP-7 ground - 2500'  
TNR-4 SFC - by Notam  
TNR-20 ground - 2500'

1. RNP-1 or RNAV-1 required.
2. A request for the RNAV (GNSS) Rwy 11 approach should be made on first contact with ATC.

- Fly-by on demand reporting
- Fly over on demand reporting

CHANGES: ELUMO crossing restriction, IGROM holding.